



WUI Name: RED ROCK RANCH - FOREST LAKES
Location: Town of Monument, El Paso County, Colorado



MFD-02
 Insp'd Date: 05/23/2022
 By: Rohde & Assoc.

- [Risk Assessment](#)
- [Tactical Plan](#)
- [Tactical Map](#)
- [Area Map](#)
- [Fire Behavior Map](#)
- [Additional Info](#)

RISK ASSESSMENT MATRIX

RED ROCK RANCH/FOREST LAKES RISK ASSESSMENT MATRIX		
SAFETY	STATIC	ATTACK
FF Safety 2	Fuels 1	Access 1
Civilian Safety - 1	Topography 1	Water 2
Air Safety 1	Clearance 2	Comms 3
Hazmat 2	Construct 1	Tac Air 1
Entrapment Risks - 1	Density 2	Winds 1

S A F E T Y	FF Safety	FF Safe	No Safety Zones	Marginal Safety Zones	Adequate Safety Zones
	Civilian Safety	Civ Safe	Mandatory Evacuation	Evacuate if Time Permits	Shelter in Place
Air Safety	Clear	Restrictions, Steep Cyns	30' to 70'	More than 70'	
HazMat	HazMat	Bulk LPG, Chemicals	Hazards in Barn	None	
S T A T I C	Fuels	Fuels	Heavy or Dead Trees, Brush	Moderate	Light
	Topography	Topog	Steep	Medium Slope	Flat
	Clearance	Clear	30' or Less	30' to 70'	More than 70'
A T T A C K	Construction	Const	Abundant Combustible	Some Combustible	Non-Combustible
	Structural Spacing	Density	Dense Spacing	Subdivision Tracts	Rural, dispersed
	Access	Access	Narrow, Dirt Rds No turnarounds	1 Ln, paved, 1-way in/out	2-Lane Rds. Good Ingress/Egress
	Water	Water	No Water Source	Ponds, pools, low flow hyd's	Good Hydrants
Communications	Comm	Poor Radio, Cell Coverage	Some Weak Spots	Good Coverage	
Tac Air Support	Tac Air	20+ Min Re-load, No LZs	10-15 Min Re-load, No LZs	5 Min re-load, LZs	

CRITICAL INFORMATION

Response Safety: Scout all areas prior to committing resources. Many dead-end roads and dirt roads with long travel times to Safety Zones (SZ) or Temporary Refuge Areas (TRA's). Identify safety and evacuation routes for responders prior to commitment. Heavy, mature timber with under-story ground fuels along frontal range and in Shiloh Pines. Hundreds of structures inter-mixed with timber, many have little or no defensible space, many are combustible construction. Crown fire potential may be high during severe burning or wind-driven conditions. Visibility may be compromised in areas of heavy timber, situational awareness of fire activity may be difficult. Paved roads are adequate width for Type 1 engines. Numerous dirt, public and private ranch roads may complicate access and evacuation control. Limited water supply in Shiloh Pines (low psi with long distance between hydrants).

Aviation Hazards: High traffic area for Military Aircraft. Directly adjacent to the U.S. Air Force Academy, approximate 25 miles from Colorado Springs Airport (COS). Order a Temporary Flight Restriction (TFR) prior to aerial operations. Elevation & temperature changes between valley floor and mountains may cause turbulent air currents, wind shear & roll eddies along ridges. Smoke inversion may settle in the valley and obscure visibility. Above ground electrical lines in much of the area. **Retardant Restrictions:** Forest Lake & Beaver Creek drainages.

Potential Choke Points/Entrapments: Structure & population density, fuel loading and limited evacuation routes may result in choke points/entrapments throughout the plan area such as: mid-slope roads off Rosita Ave (Verano Ave, Largo Ave, Corona St); in Limbaugh Canyon/Monument Creek drainage: (Rock Ridge Rd, Mitchell Ave, Mt Herman Rd, Nursery Rd, Schilling Rd); exiting Hay Creek Rd. SH 105 likely to exceed traffic capacity during mass evacuation. **Mt Herman Rd Bridge Restrictions: No Water Tenders or Truck Companies!**

BRIEFING INFORMATION

Fuels	Heavy Ponderosa Pine, Juniper & Gambel Oak. (NWCG Fuel Model 9 to 10/Timber Litter-TL4) with dense closed canopy in front range areas & Shiloh Pines. Annual grasses with mixed brush (NWCG Fuel Model 1,2,3/GR7 to 5/GS2) in Mt Herman, Hay Creek & Forest Lakes																		
Last Year(s) Burned	2013 Black Forest: 14,280 acres, 509 structures, 41,000 evacuated, 2012 Waldo Cyn: 18,247 acres, 2 dead, 346 str's lost, 32,000 evac, 2002 Hayman: 138,114 acres, 6 deaths, 133 str's lost.																		
Expected Fire Behavior	Fires initiating within the area may develop rapidly due to fuel types and arrangement. Ladder fuels can carry fire into timber canopy with potential for crowning & long range spotting, especially during high wind events. Expect long flame lengths, rapid rates of spread in lighter fuels with torching and sustained runs in timber during critical fire weather. Look for breaks in timber to grass fuels for containment lines. Most historical major fires have approached the plan area from the Front Range. East-west aligned drainages funnel winds and fire rapidly into this plan area. Past fires have been aided by either plume column collapse or thunderstorm outflow; moving fires rapidly into wind-aligned canyons and from wildlands into structures. Daily thunderstorms can occur in the mountains during the summer months of June, July & August.																		
Topography	Monument is situated at the base of the Front Range of the Rocky Mountains at an elevation of 7135'. West is the Pike & San Isabel National Forest (PSF) rising to Mt. Herman (9063') and Pikes Peak (14,110'). West-east oriented drainages extend from the mountains into the low-rising hills of the plan area. Plateaus and rolling plains characterize areas further east. Drainages may align with dominate southwest winds to accentuate fire behavior.																		
Access	Access to plan area on I-25/US 87 and W. Baptist Rd from the south; SH105 & Red Rock Ranch Dr from the north. Mt Herman Rd, Schilling Ave, Spaatz Rd, Forest Lakes Dr & Hay Creek Rd provide access into the plan area. Many dirt roads, most are Type 1 & 3 engine compatible. Mt. Herman bridge passable for Type 1, 3 or 6 engine only, no truck companies water tenders or dozers. Most access roads are primary evacuation routes; expect congestion.																		
Special Hazards	1. Large lots w/long driveways, requires many engines to protect homes, many on private wells 2. High number of homes with open eaves, combustible siding and limited defensible space 3. Tree density and height in Shiloh Pines may make it difficult to observe fire location/smoke column and Shiloh Pines has low hydrant pressure and hydrants are 1000' apart 4. High pressure (500-600 psi) gas lines on west side of I-25 5. Several trailheads where hikers are out of cell range, evacuation notification may be difficult.																		
Safety Zones/Temporary Safe Refuge Areas	<table border="1" style="width: 100%; border-collapse: collapse;"> <thead> <tr> <th>Type</th> <th>Location</th> <th>Limits of Use</th> </tr> </thead> <tbody> <tr> <td>SZ</td> <td>Open Field at West end of Fort Collins Dr</td> <td>4 Strike Teams (20 engines) 39° 06' 40" N x 104° 55' 01" W</td> </tr> <tr> <td>SZ</td> <td>Defensible homes, clear fields along Suncrest Rd</td> <td>2 Strike Teams (10 engines) 39° 05' 85" N x 104° 54' 09" W</td> </tr> <tr> <td>SZ</td> <td>Hay Creek Rd & Green Mountain Rd</td> <td>4 Strike Teams (20 engines) 39° 02' 53" N x 104° 54' 12" W</td> </tr> <tr> <td>TRA</td> <td>Cul de sac East end of Plateau Dr.</td> <td>4 Strike Teams (20 engines) 39° 03' 15" N x 104° 54' 08" W</td> </tr> <tr> <td>SZ</td> <td>Rampart Range Ranch, N. Monument Lake Rd.</td> <td>5 Strike Teams (25 engines) 39° 05' 47" N x 104° 53' 04" W</td> </tr> </tbody> </table>	Type	Location	Limits of Use	SZ	Open Field at West end of Fort Collins Dr	4 Strike Teams (20 engines) 39° 06' 40" N x 104° 55' 01" W	SZ	Defensible homes, clear fields along Suncrest Rd	2 Strike Teams (10 engines) 39° 05' 85" N x 104° 54' 09" W	SZ	Hay Creek Rd & Green Mountain Rd	4 Strike Teams (20 engines) 39° 02' 53" N x 104° 54' 12" W	TRA	Cul de sac East end of Plateau Dr.	4 Strike Teams (20 engines) 39° 03' 15" N x 104° 54' 08" W	SZ	Rampart Range Ranch, N. Monument Lake Rd.	5 Strike Teams (25 engines) 39° 05' 47" N x 104° 53' 04" W
Type	Location	Limits of Use																	
SZ	Open Field at West end of Fort Collins Dr	4 Strike Teams (20 engines) 39° 06' 40" N x 104° 55' 01" W																	
SZ	Defensible homes, clear fields along Suncrest Rd	2 Strike Teams (10 engines) 39° 05' 85" N x 104° 54' 09" W																	
SZ	Hay Creek Rd & Green Mountain Rd	4 Strike Teams (20 engines) 39° 02' 53" N x 104° 54' 12" W																	
TRA	Cul de sac East end of Plateau Dr.	4 Strike Teams (20 engines) 39° 03' 15" N x 104° 54' 08" W																	
SZ	Rampart Range Ranch, N. Monument Lake Rd.	5 Strike Teams (25 engines) 39° 05' 47" N x 104° 53' 04" W																	

UNIFIED COMMAND

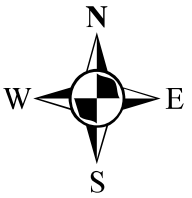

Potential Incident Command Post Location	Initial ICP: MFD Fire Station 1 18650 SH 105, Monument (719) 484-0911
	Extended ICP: Lewis Palmer High School 1300 Higby Rd, Monument (719) 488-4720
Unified Command Participants	MFD, PLFD, EPSO, DFPC, USFS-PSF, DCFD, CSP, MPD, CSFD,
Staging Areas	<ol style="list-style-type: none"> Blueink Studio Parking Lot, 19775 Mitchell Ave, Monument, 80132, (719) 487-0062 MFD Sta 1, 18650 CO 105, Monument, 80132, (719) 484-0911 Dirty Woman Park, 17575 Mitchell Ave, Monument, 80132, (719) 330-9642 Jabil Inc, 1051 Synthes Ave, Monument, 80132, (719) 481-5300 Aces Gym, 16815 & 16825 Mitchell Ave, Monument, 80132, (719) 477-1187 Safeway Parking Lot, 624 SH 105, Monument, 80132, (719)477-1187

LARGE FIRE DEVELOPMENT FACTORS

<i>Weather</i>	
Temperature	> 75 ° Fahrenheit
Relative Humidity	< 15%
Wind Speed	Average: 7-13 MPH Gusts: 28 MPH
Fuel Moisture	Live Fuel Moisture under 25%
<i>Fire Behavior</i>	
Rate of Spread	3,300-7,920 feet / hour
Spotting	1.0 mile
Flame Length	Avg. 8 feet Peak 30 feet
* Peak flame lengths occur when fire growth is in alignment with heavy fuel, slope and wind.	

Water Supply **Pump house at 2631 Long Valley Rd requires power to maintain hydrant water supply. Low pressure hydrants 1000' apart in Shiloh Pines.** Decent hydrants in most areas. Some private wells with no hydrants/water tenders required. Monument is served by 5 independent water companies using gravity fed-electrical pumped systems & dry barrel hydrants. Contact Town of Monument (719) 481-2954 to increase water pressure.

Communications
Initial Attack: 800MHz Zone A Channels. **Extended Attack:** 800 MHz Zone C. Comm Center will assign freqs. VHF for Air-Ground. Consider transition to VHF Comm Plan (205) for major fire.

	WUI Name: RED ROCK RANCH - FOREST LAKES	 	MFD-02
	Location: Town of Monument, El Paso County, Colorado		Insp'd Date: 05/23/2022 By: Rohde & Assoc.

Risk Assessment	Tactical Plan	Tactical Map	Area Map	Fire Behavior Map	Additional Info
---------------------------------	-------------------------------	------------------------------	--------------------------	-----------------------------------	---------------------------------

RECOMMENDED STRATEGIES & TACTICS (PACE)

<p>Primary Plan (Offensive - Direct): Fire likely to hold with initial control lines, high probability for containment from initial attack. Fire Ignition Within Plan Boundary: Aggressively attack fires within the plan boundaries utilizing an offensive direct attack on flanks, with aircraft holding fire at ridge lines, access or dirt roads or other appropriate anchor points. Use improved roads or open fields as anchor points. Use fixed wing aircraft to slow the head of the fire and helicopters to attack and pinch the flanks. Keep the fire footprint as small as possible. Support engine company operations with water tenders where domestic water is from private wells or limited hydrant supply (Shiloh Pines). Fire Entering Plan Area: Utilize fixed wing aircraft to treat perimeter arterial roads to try to keep fire from entering plan area. Use helicopters to attack down wind spot fires. Deploy ground forces to protect structures on the perimeter, using prep-and-defend or fire-front-following tactics. Deploy ground forces down wind for ember patrol and aggressive attack on spot fires. Support ground forces with water tenders as needed.</p>	<p>Alternate Plan (Offensive - Indirect): Active head, fire is spotting and/or torching, multi-structure ignition. Fire behavior may calm overnight. Fire Ignition Within Plan Boundary: Expand the fire control box to alternate control points. Use fixed wing aircraft to treat along roads to hold the fire to maintain evacuation routes. Use copters to cool and slow the head and flanks of the fire. Deploy ground resources to attack the flanks and provide structure protection using prep-and-go or prep-and-defend tactics. Deploy water tenders to support engine company operations. Deploy dozers or road graders in open fields to widen major arterial roads, support with retardant drops. Fire Entering Plan Area: Continue to support first line of defense with aircraft until line is overrun. Fall back to alternate control points and treat with retardant drops to slow fire progression. Use copters to cool the head of the the fire and attack spot fires. Deploy ground resources for structure protection using prep-and-go or prep-and-defend tactics, support with water tenders. Use firing tactics with IC approval only!</p>
--	--

<p>Contingency Plan (Defensive - Civilian Safety): Extreme fire behavior, elevated responder risk, many structures involved, elevated evacuation, multi-operational period likely. Fire Ignition Within Plan Boundary: Divide plan area into fire compartments using major arterial roads, (Suncrest Rd, Red Rock Ranch Dr, Mount Herman Rd, Forest Lake Rd, Hay Creek Rd) as north-south boundaries. Use SH 105, N Monument Lake Rd, Mitchell Ave, Forest View Wy as east-west roads boundary. Improve with retardant drops and widen with dozer/graders if possible. Protect evacuation routes. Consider firing tactics to further widen control line (with IC approval). Protect structures using fire-front-following tactics. Deploy ground forces to support SZ/TRAs. Fire Entering Plan Area: Use perimeter north-south & east-west roads, (SH 105, SH 83, I-25, Red Rocks Dr & Mt. Herman Rd) as control lines to slow/stop fire from entering plan area. Support with water and retardant drops. Widen control line with dozers/graders where able, deploy ground forces downwind for ember patrol and fire attack where safe to do so. Deploy ground forces to support SZ/TRAs and maintain evacuation routes.</p>	<p>Emergency Plan (Defensive - Responder Safety): Dangerous, life-threatening fire behavior, high structure loss potential, high responder risk, critical life safety issues, developing major fire. Prioritize responder safety first. Do not attempt to access areas with limited defensible space or on long dead-end roads with emergency responders. All Fires: Cease civilian evacuations if routes become compromised. Direct civilians to SZ/TRA locations or shelter-in-place with first responders if safe to do so. Prioritize SZ/TRA locations and deploy both air and ground resources to protect civilian/first responders within these zones. If time permits, use dozers/graders to improve SZ/TRAs that are open fields. Deploy ground resources into commercial areas along SH 105 to protect spread into town center. Expand evacuations and notify communities outside the plan area in direct path of fire spread. Do not engage in direct attack where safety is not absolute. Consider indirect fire containment options at considerable distances. Expect considerable structure loss with potential civilian injury or loss of life.</p>
--	--

Perimeter Control Plan:
Hold running wildland/WUI fire to the fire plan boundaries: Hold fire to the Red Rock Ranch or Forest Lake region and prevent the spread to adjacent communities. Use retardant drops to support control lines and roads which may also be evacuation routes. Keep retardant out of Beaver Creek & Forest Creek drainages. Use of road graders to establish control lines or safety zones in fields and rolling hills may be effective alternative to dozers. Use dozers in areas of denser fuels and uneven topography. Keep the fire out of wind aligned drainages if possible. **Primary Control Points:** Redstone Ridge Rd, Red Rock Ranch Rd, Sunburst Dr, Mount Herman Rd, Forest Lakes Dr & Lindberg Rd. **Alternate Control Points:** Suncrest Rd, SH 105, N. Monument Lake Rd, Mitchell Ave & Hay Creek Rd. Use interior roads as control lines if possible to shrink the box if fire conditions permit.

EVACUATION PLAN

Primary Evacuation Plan:
Evacuate early (especially Red Rock Ranch & Shiloh Pines areas) for fires within the plan expected to go beyond initial attack. Use aircraft to protect evacuation routes as long as possible. Activate "Everbridge" Reverse 911 System & "Peak Alert" wireless cell phone notification systems. Large equestrian populations in Red Rock Ranch area may cause choke points and will require extended evacuation time or shelter-in-place (call Animal LE Dispatch: 719-473-1741 for assistance). Send large animals to Douglas Co shelters (see Temp Evacuation Assembly Points). Smoke may obscure visibility, creating dangerous driving conditions. **Primary evacuation routes:** I-25, SH 105, Red Rock Ranch Dr, Mt Herman Rd, Mitchell Ave, Forest Lakes Dr, Hay Creek Rd. **Alternate routes:** N Monument Lake Rd, Spaatz Rd, Schilling Ave, Arnold Ave, Doolittle Rd, Old Denver Hwy, **Contingency routes:** Beacon Lite Rd, County Line Rd to Palmer Lake if primary routes are congested or impacted by fire. Relocate civilians to uninvolved areas outside of the operational area.

Evacuation Trigger Point:
Fires from northeast/east: Initiate evacuation on established fire threatening SH 105. **Fires from north/northwest:** Initiate evacuation when fire enters Monument Creek, reaches Mt Herman or crosses S Valley Rd in Palmer Lake. Fires spreading from Palmer Lake will have impacted populated areas prior to reaching this fire plan location and evacuations may be required sooner. **Fires from south/south-west:** Initiate evacuations for well established fire crossing N Boundary Dr, or in Hay Creek. Fires within plan area: Evacuate perimeter of community nearest to the fire threat first. Consider shelter-in-place at homes with good defensible space. **All Fires:** Notify hikers at trail heads: Palmer Lake, Limbaugh Canyon, Red Rocks Rd. Mt Herman (SH 320). Helicopters may be needed for hiker evacuation.

<p>Temp. Evacuation Assembly Points (Human & Animal) Primary People: 1. Palmer Ridge High School, 19255 Frontage Rd, Monument, 80132, (719) 867-8600 2. Lewis Palmer Middle School, 1776 Woodmoor Dr, Monument, 80132, (719) 488-4776 3. Lewis Palmer High School, 1330 Higby Rd, Monument, 80132 (719) 488-4720</p>	<p>Primary Animals: 1. Douglas County Fair Grounds, 500 Fairgrounds Rd, Castle Rock, 80104, (720) 733-6900 2. Greenland Open Space, Frontage Rd & Skyview Ln, Douglas County</p>
--	---

POPULATION & STRUCTURES AT-RISK		STRUCTURAL TRIAGE	
Population	2,835	Threatened/ Non-Defensible	Expect high structure loss with extreme fire behavior Shiloh Pines: 50% Red Rock Ranch/Forest Lake: 30%
Planning Unit Acreage	6,910	Threatened/Defensible	60% Red Rock Ranch, 40% Forest Lake
Structures	1,028	Non-Threatened	10% Central downtown area along SH 105
		W/ Defensible Space	60% Red Rock Ranch, 60% Forest Lake

EMERGENCY RESOURCE NEEDS - FIRST SIX HOURS
 (In addition to Initial Attack Resource)

<p>Fire Ordering Point: Monument Fire District (719) 391-8918</p>	<p>Law Enforcement Ordering Point: El Paso Co. Sheriff / Monument PD (719) 391-8918,</p>
--	---

<p>Engines: The number range reflects the number of "minimum" to "preferred" resources.</p>			<p>Law Enforcement (LE): IC or Supervisor present at the ICP. El Paso Co. Sheriff (EPSO) has jurisdictional authority for fire command, but will delegate to fire authorities. 10 EPSO deputies to evacuation. 6-10 EPSO and CSP Officers to traffic management. Immediate traffic control points: SH 105-x-I-25; SH 105-x-S Valley Rd. I-25-x-Baptist Rd, SH 105-x-Red Rock Ranch Dr, N Monument Lake Rd-x-Michell Ave, W Baptist Rd-x-Old Denver Hwy, Beacon Lite Rd-x-2nd St, Beacon Lite Rd-x-County Line Rd. Put LE control points at Temporary Assembly Points. Send evacuees to Temporary Assembly Points and non-local traffic out of the area. SH 105 may need to be closed if fire threatens it.</p>
Type 1 Engines: 15-20 (Strike Teams: 3-4)	Type 3/6 Engines: 15 (Strike Teams: 3)	Water Tenders: 6-10	
Crews	Dozers	Overhead: 5	
Single: 4-6 : STs: 0	Single: 2-4 STs: 0	Div. Sup.: 4	

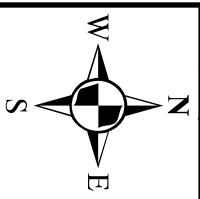
<p>Aircraft: Type 1 Helicopter (Large): 1-2 Type 2 Helicopter (Med.): 1-2 Type 3 Helicopter (Light): 1 Air Tankers: 2-4 VLAT: 1</p>	<p>Logistics: File F-MAG application with DFPC during active structure threat. Notify Pikes Peak Regional Office of Emergency Management (OEM), (719) 575-8422, to open El Paso Co EOC for major fire resource and evacuation needs. Consider first responder fuel, water & food needs early. Notify Red Cross & Animal Control for human and large animal evacuation needs. There is no official animal evacuation plan for this area. Call Animal LE Dispatch: (719) 473-1741. LE escort required to access area during fire.</p>
---	---

WUI Engine Deployment - High Risk
 1 engine/2-4 perimeter structures, 1 engine/isolated structures, 2 engines/ multi-family structures

WUI Engine Deployment - Moderate Risk
 1 engine/2-4 perimeter structures, 1 engine/isolated structure, 2 engines/multi-family structure

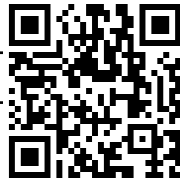
WUI Engine Deployment - Low Risk
 1 strike team/2 blocks of perimeter homes

Other:
 Notify Mountain View Electrical Association and Core Electric Cooperative for potential power shut downs. Notify El Paso County to assist in traffic management. Seek Agency Reps from Local, State and Federal Fire, Medical and Law agencies. Identify PIO for media on major fire. Muster animal rescue resources outside of operational area and provide escort into areas of need.



WUI Name: RED ROCK RANCH - FOREST LAKES

Location: Town of Monument, El Paso County, Colorado



MFD-02

Insp'd Date: 5/23/2022
By: Rohde & Assoc.

[Risk Assessment](#)

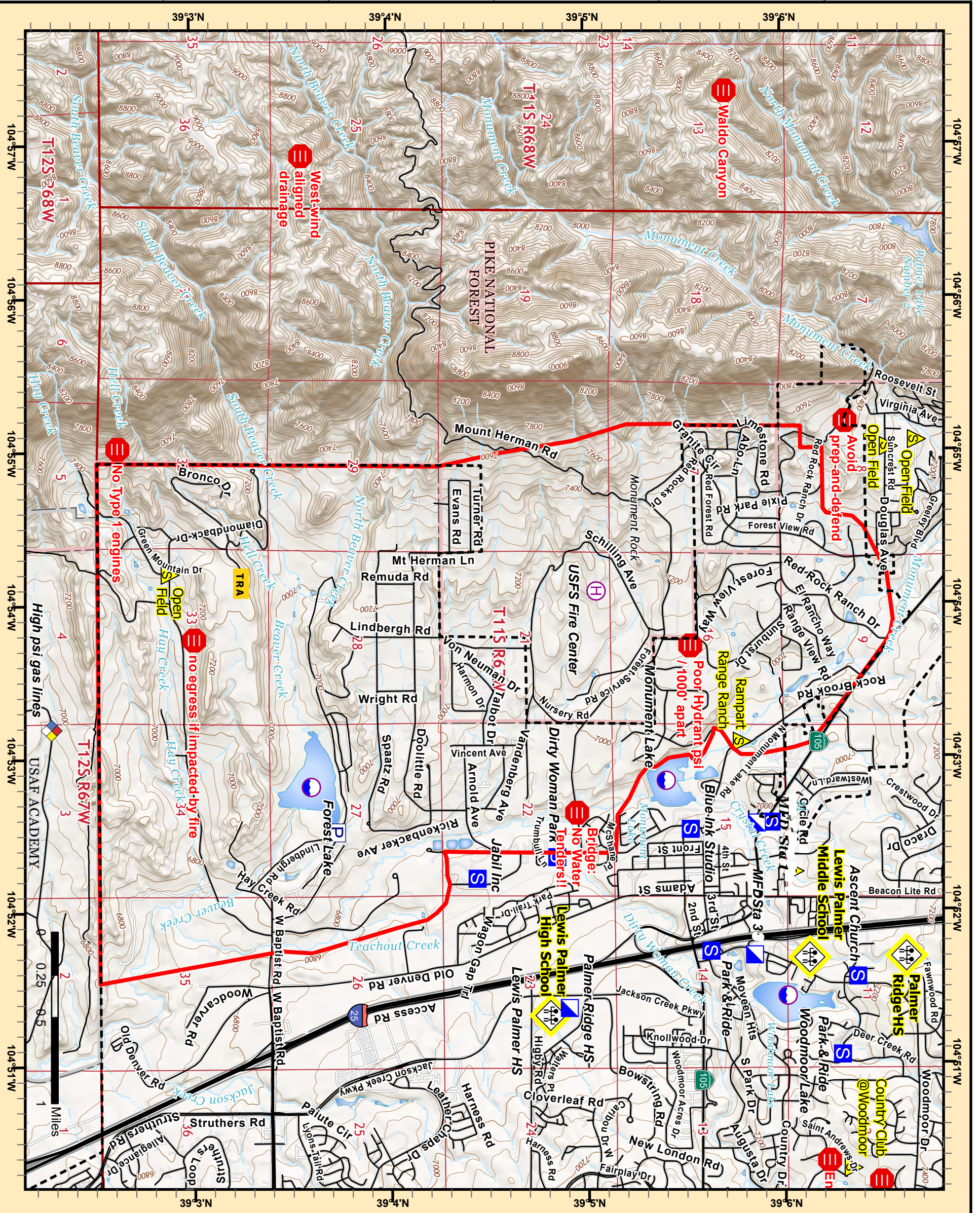
[Tactical Plan](#)

[Tactical Map](#)

[Area Map](#)

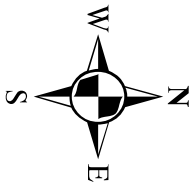
[Fire Behavior Map](#)

[Additional Info](#)



CRITICAL INFORMATION:

- Extreme Life Safety Hazard
- Pump
- Temp Refuge Area
- Temporary Evacuation Assembly Point
- Safety Zone
- Staging Area
- Incident Command Post
- Helibase
- Hazmat
- Dip Site



WUI Name: **RED ROCK RANCH - FOREST LAKES**

Location: Town of Monument, El Paso County, Colorado



MFD-02

Insp'd Date: 5/23/2022
By: Rohde & Assoc.

[Risk Assessment](#)

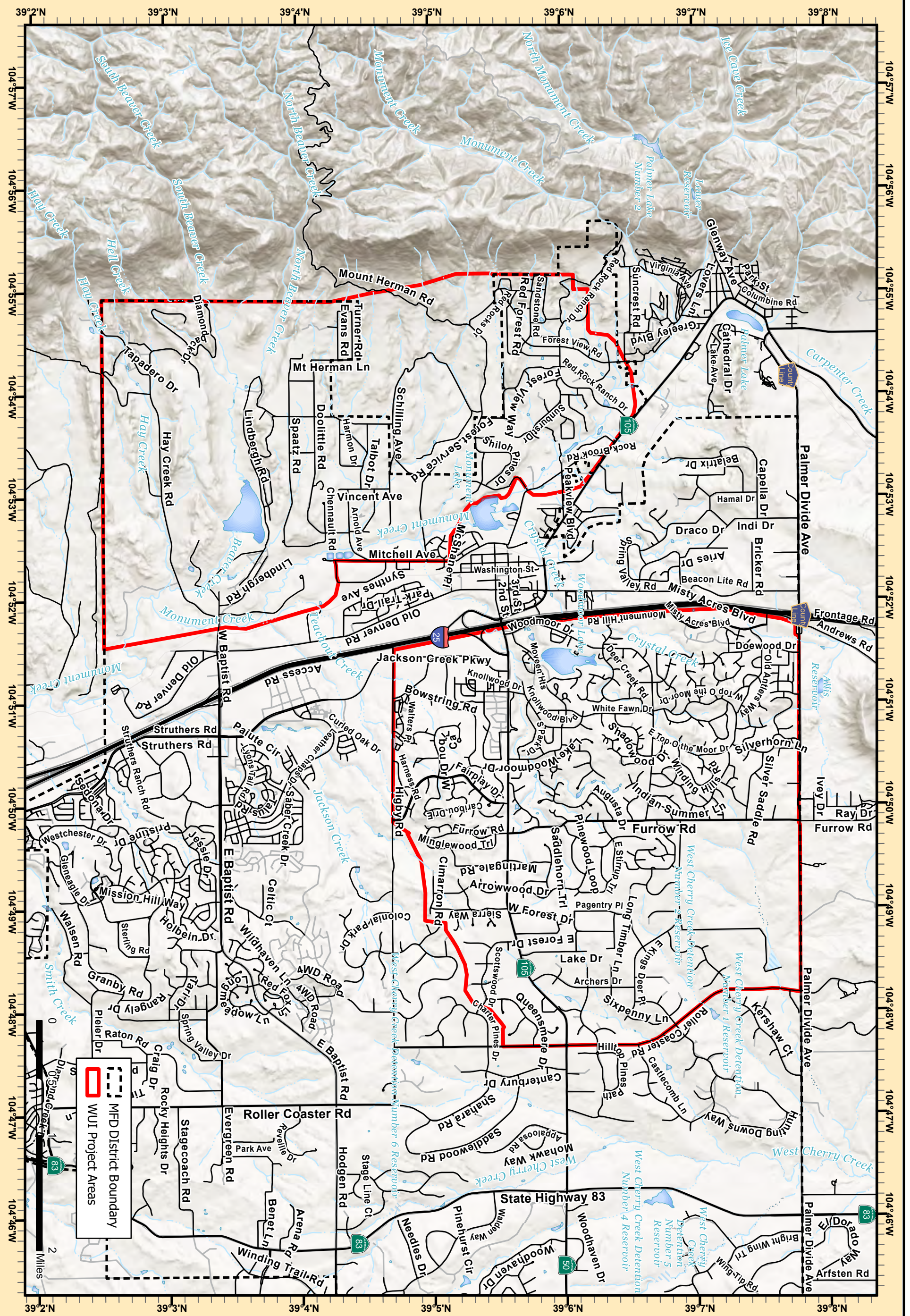
[Tactical Plan](#)

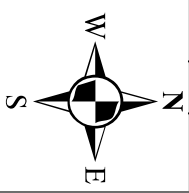
[Tactical Map](#)

[Area Map](#)

[Fire Behavior Map](#)

[Additional Info](#)





WUI Name: RED ROCK RANCH - FOREST LAKES

Location: Town of Monument, El Paso County, Colorado



MFD-02

Insp'd Date: 5/23/2022
By: Rohde & Assoc.

[Risk Assessment](#)

[Tactical Plan](#)

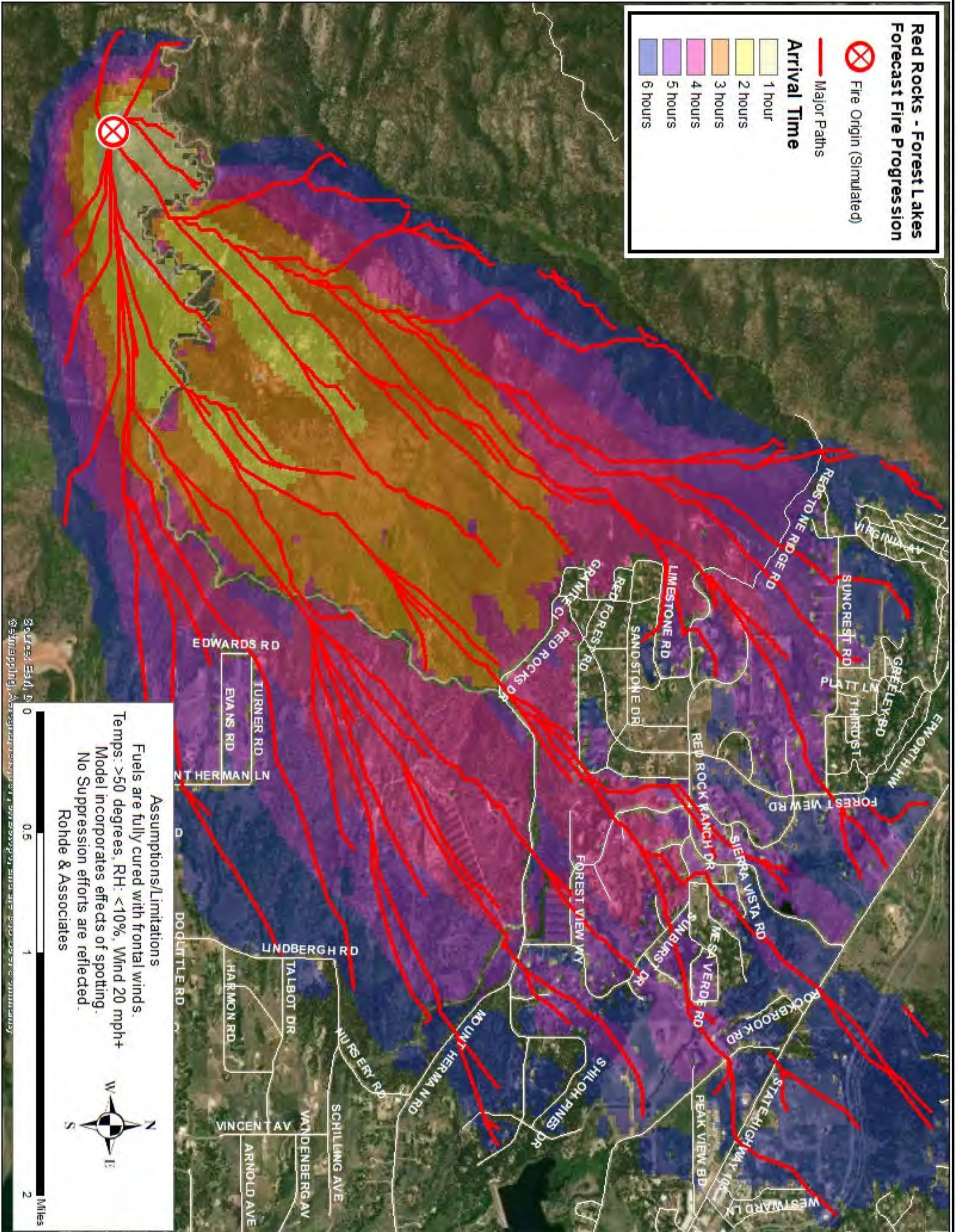
[Tactical Map](#)

[Area Map](#)

[Fire Behavior Map](#)

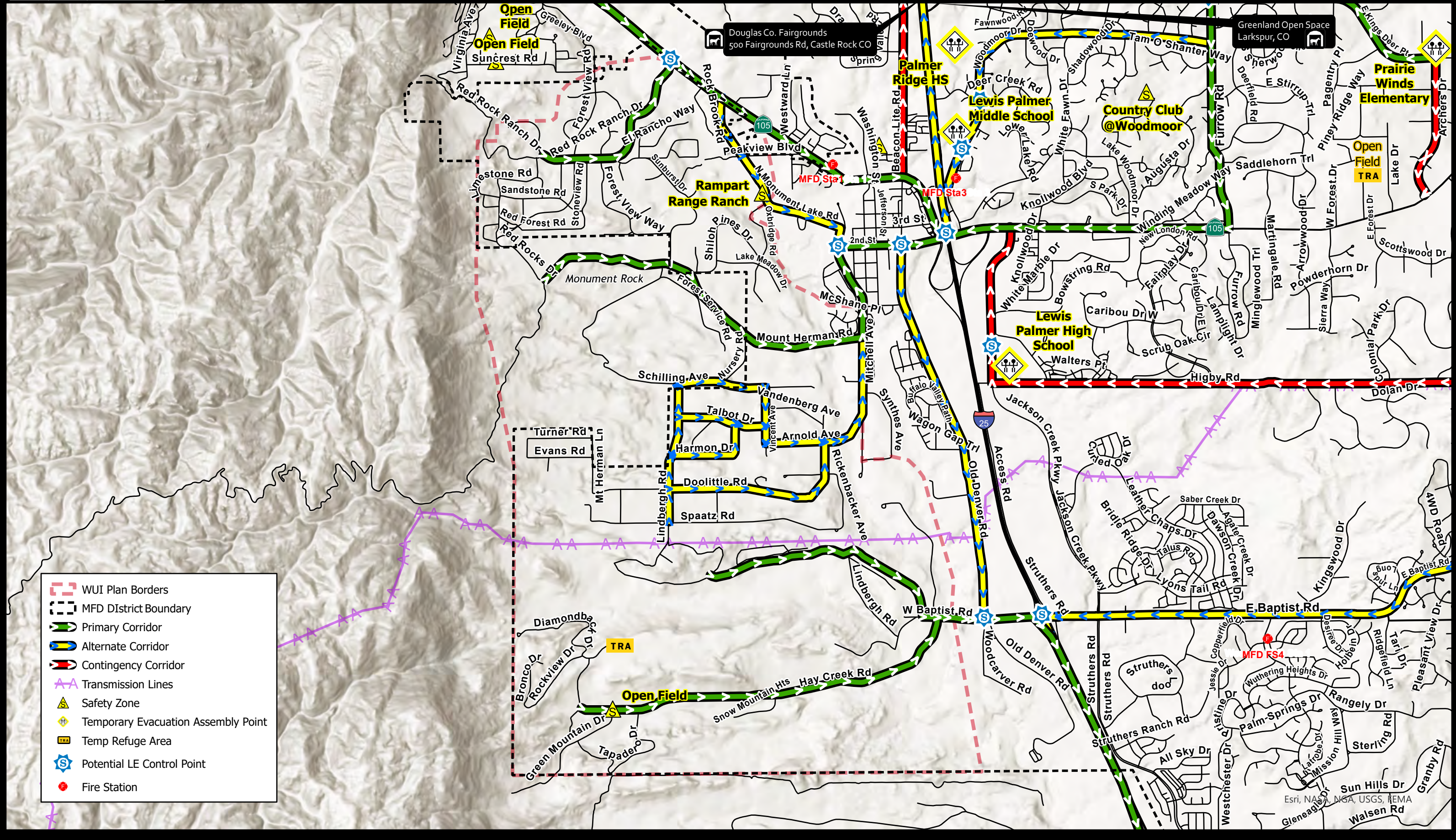
[Additional Info](#)

Fire Behavior Map



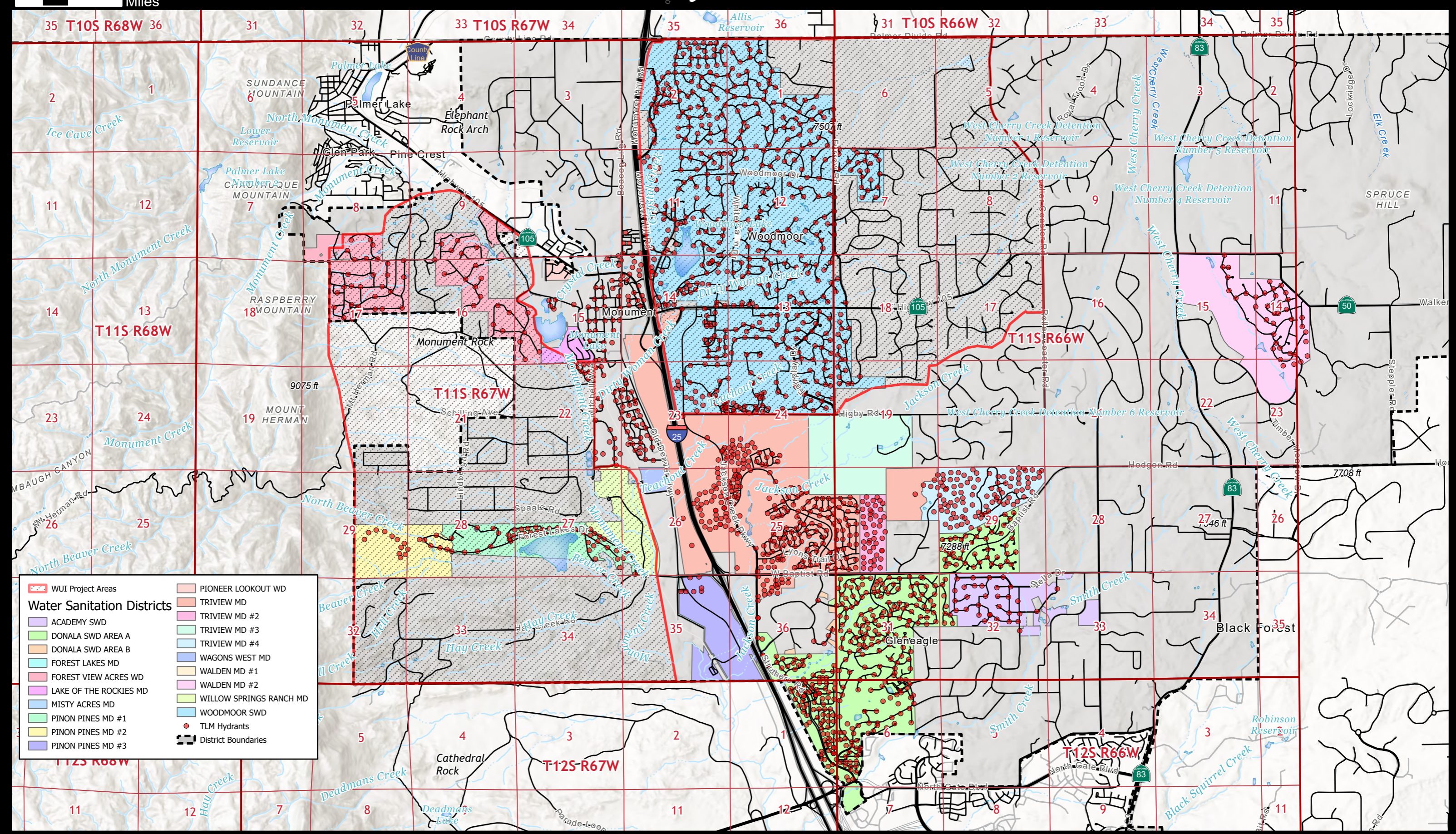


Red Rock Ranch / Forest Lakes Evacuation Plan



- WUI Plan Borders
- MFD District Boundary
- Primary Corridor
- Alternate Corridor
- Contingency Corridor
- Transmission Lines
- Safety Zone
- Temporary Evacuation Assembly Point
- Temp Refuge Area
- Potential LE Control Point
- Fire Station

Monument Water Systems



WUI Project Areas

Water Sanitation Districts

- ACADEMY SWD
- DONALA SWD AREA A
- DONALA SWD AREA B
- FOREST LAKES MD
- FOREST VIEW ACRES WD
- LAKE OF THE ROCKIES MD
- MISTY ACRES MD
- PINON PINES MD #1
- PINON PINES MD #2
- PINON PINES MD #3
- PIONEER LOOKOUT WD
- TRIVIEW MD
- TRIVIEW MD #2
- TRIVIEW MD #3
- TRIVIEW MD #4
- WAGONS WEST MD
- WALDEN MD #1
- WALDEN MD #2
- WILLOW SPRINGS RANCH MD
- WOODMOOR SWD
- TLM Hydrants
- District Boundaries